

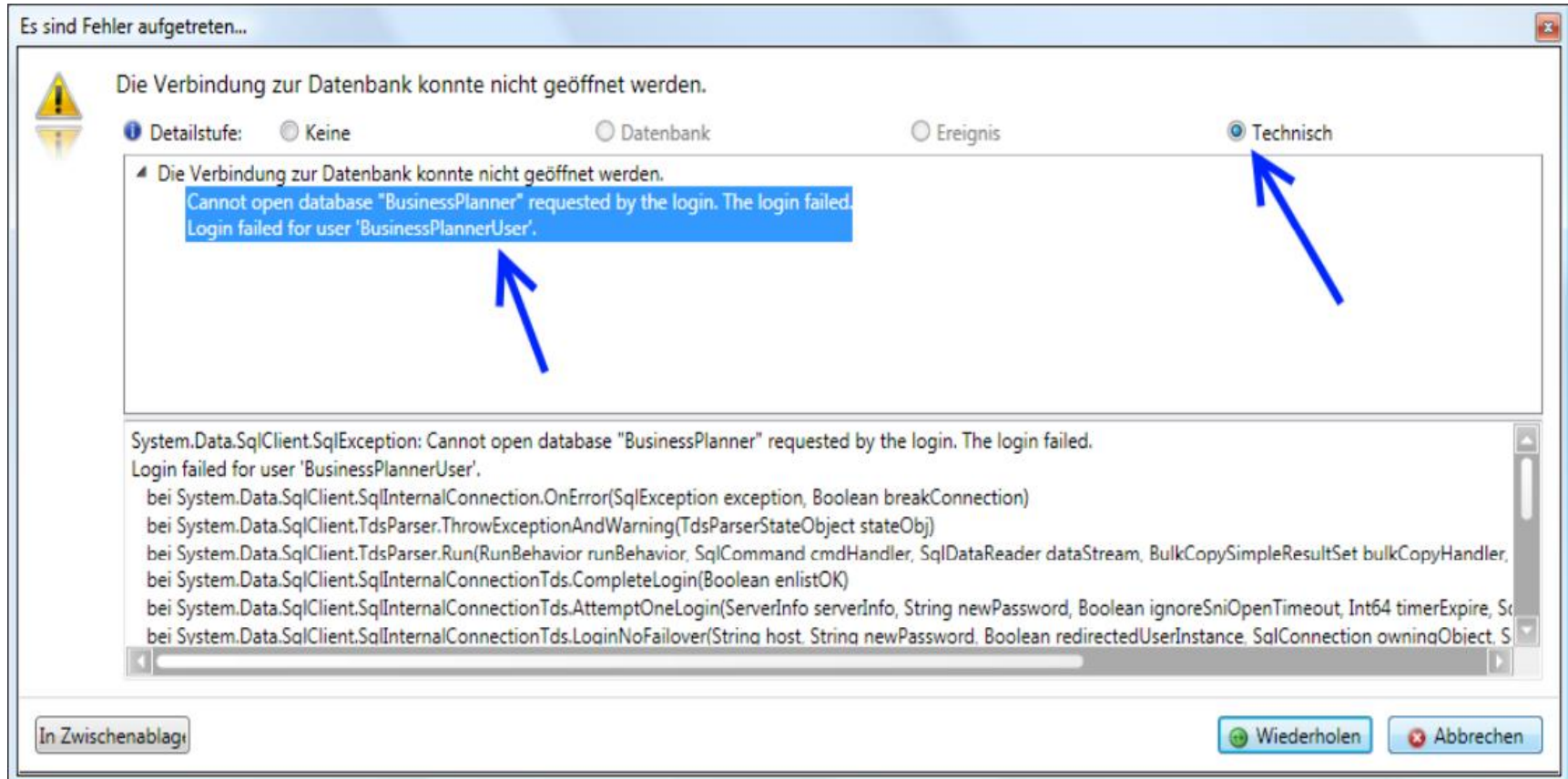
## BusinessPlanner Datenbank Restore

---

Fehlermeldung: „Login failed for user `BusinessPlannerUser`“

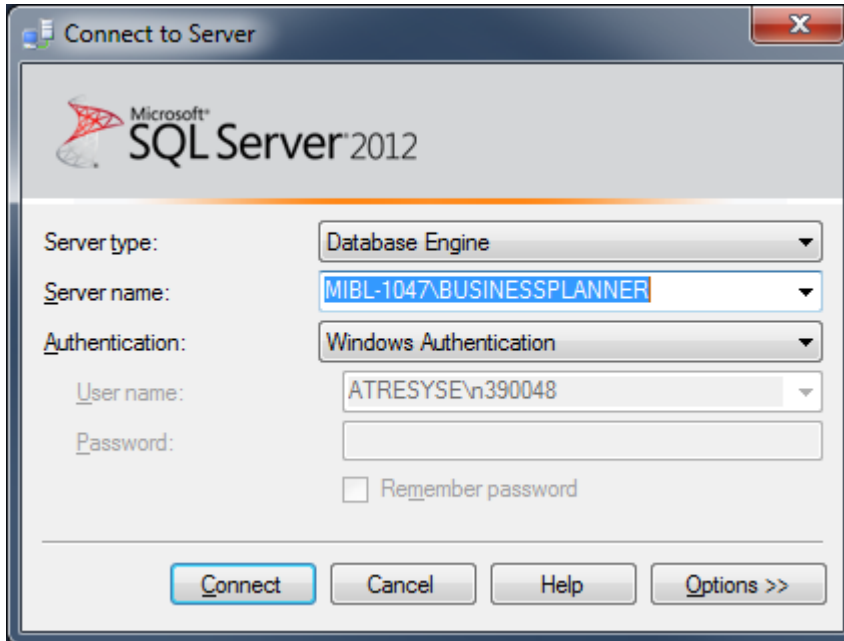
---

# Login failed for user „BusinessPlannerUser“



# Fehlerbehebung mittels SQL Server Management Studio

Starten Sie das Management Studio und verbinden Sie sich mit der BusinessPlanner Instanz:



Fußzeile:

# Fehlerbehebung mittels SQL Server Management Studio

The screenshot shows the Microsoft SQL Server Management Studio interface. On the left, the Object Explorer displays the server hierarchy for 'MIBL-1047\BUSINESSPLANNER (SQL Server 11.0.6020 - ATRESYSE\n390048)'. The 'BusinessPlanner' database is selected. On the right, the 'Database Properties - BusinessPlanner' dialog box is open, with the 'Files' tab selected. The 'Database name' is 'BusinessPlanner' and the 'Owner' is 'BusinessPlannerServerAgent'. The 'Database files' table is visible:

Logical Name	File Type	Filegroup	Initial Size (MB)	Autogrowth / Maxsize
BusinessPla...	Rows ...	PRIMARY	2500	By 100 MB, Unlimited
BusinessPla...	Log	Not Applicable	101	By 100 MB, Limited to 20971...

Below the table, the 'Connection' section shows the server 'MIBL-1047\BUSINESSPLANNER' and connection 'ATRESYSE\n390048'. The 'Progress' bar is at 'Ready'. At the bottom, there are 'Add', 'Remove', 'OK', and 'Cancel' buttons.

Markieren Sie die BusinessPlanner Datenbank.  
Wählen Sie über das rechte Maustastenmenü „Eigenschaften“ aus.  
Unter Files muss der BusinessPlannerServerAgent als Owner ausgewählt werden.

# Fehlerbehebung mittels SQL Server Management Studio

Microsoft SQL Server Management Studio

Object Explorer

MIBL-1047\BUSINESSPLANNER (SQL Server 11.0.6020 - ATRESYSE\n390048)

Logins

- ##MS\_PolicyEventProcessingLogin##
- ##MS\_PolicyTsqlExecutionLogin##
- ATRESYSE\n390048
- BusinessPlannerKey
- BusinessPlannerServerAgent
- BusinessPlannerSetup
- BusinessPlannerUser
- NT AUTHORITY\SYSTEM
- NT Service\MSSQL\$BUSINESSPLANNER
- NT SERVICE\SQLAgent\$BUSINESSPLANNER
- NT SERVICE\SQLWriter
- NT SERVICE\Winmgmt
- sa

Login Properties - BusinessPlannerUser

Select a page: General, Server Roles, **User Mapping**, Securables, Status

Users mapped to this login:

Map	Database	User	Default Schema
<input checked="" type="checkbox"/>	BusinessPlanner	BusinessPlannerUser	dbo
<input type="checkbox"/>	master		
<input type="checkbox"/>	model		
<input type="checkbox"/>	msdb		
<input type="checkbox"/>	tempdb		

Guest account enabled for: BusinessPlanner

Database role membership for: BusinessPlanner

- db\_accessadmin
- db\_backupoperator
- db\_datareader
- db\_datawriter
- db\_ddladmin
- db\_denydatareader
- db\_denydatawriter
- db\_owner
- db\_securityadmin
- public

Connection

Server: MIBL-1047\BUSINESSPLANNER

Connection: ATRESYSE\n390048

Progress: Ready

OK Cancel

Unter Security / Logins klicken Sie den BusinessPlannerUser. Wählen Sie über das rechte Maustastenmenü „Eigenschaften“ aus. Setzen Sie die Eigenschaften wie im Screenshot abgebildet. Anschließend können Sie den BusinessPlanner wieder starten.